

CLAVA



CLAVA

DESIGNER

- Umage; Søren Ravn Christensen

LEAD TIME

- 2 weeks

GSA

- Not available

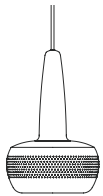
SPECIFICATIONS

- Aluminum
- E26/E27 - max 15W LED (not included)

Assembly
- Assembly required

MODEL

Pendant Lamp



\$650

Dimensions

Diameter | 8.5"
Height | 13"

Shipping

All pricing is FOB Louisville, KY.
Weight | 2.9lbs
Dimensions | 9.7" x 12.8" x 5.6"

FINISHES



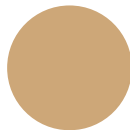
Matte
White



Polished
Steel



Brushed
Copper



Brushed
Brass

White Canopy & Cord
2051-4007 | Matte White
2110-4007 | Polished Steel
2111-4007 | Brushed Copper
2112-4007 | Brushed Brass

Black Canopy & Cord
2051-4008 | Matte White
2110-4008 | Polished Steel
2111-4008 | Brushed Copper
2112-4008 | Brushed Brass

HOW TO SPECIFY

1. Select color model #.



376

DESIGNER

- Umage; Søren Ravn Christensen

LEAD TIME

- 2 weeks

GSA

- Not available

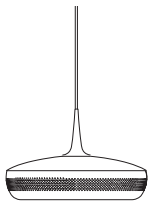
SPECIFICATIONS

- Aluminum
- E26/E27 - max 15W LED (not included)

Assembly
- Assembly required

MODEL

Pendant Lamp



\$1025

Dimensions

Diameter | 17"
Height | 11"

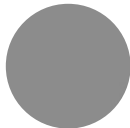
Shipping

All pricing is FOB Louisville, KY.
Weight | 5.1lbs
Dimensions | 18" x 18" x 5.8"

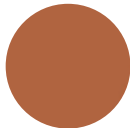
FINISHES



Matte White



Polished Steel



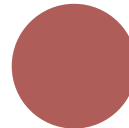
Brushed Copper



Brushed Brass



Black



Red Earth



Ochre



Umber



Slate

White Canopy & Cord

2076-4007 | Matte White
2097-4007 | Polished Steel
2098-4007 | Brushed Copper
2099-4007 | Brushed Brass
2217-4007 | Black
2301-4007 | Red Earth
2302-4007 | Ochre
2303-4007 | Umber
2304-4007 | Slate

Black Canopy & Cord

2076-4008 | Matte White
2097-4008 | Polished Steel
2098-4008 | Brushed Copper
2099-4008 | Brushed Brass
2217-4008 | Black
2301-4008 | Red Earth
2302-4008 | Ochre
2303-4008 | Umber
2304-4008 | Slate

HOW TO SPECIFY

1. Select color model #.

CLAVA DINE WOOD

DESIGNER

- Umage; Søren Ravn Christensen

LEAD TIME

- 2 weeks

GSA

- Not available

SPECIFICATIONS

- Oak, ash, laminated veneer
- E26/E27 - max 15W LED (not included)
- Includes black canopy

Assembly
- Assembly required

MODEL

Pendant Lamp



\$1525

Dimensions

Diameter | 17"
Height | 9.4"

Shipping

All pricing is FOB Louisville, KY.
Weight | 7.5lbs
Dimensions | 18" x 18" x 6.3"

FINISHES



Oak Ash
2343



Dark Oak
Ash
2344



Black
2362

HOW TO SPECIFY

1. Select color model #.



378