

# ATMOS



# ATMOS

## DESIGNER

- UNION Design

---

## LEAD TIME

- 4-5 weeks

---

## SPECIFICATIONS

Foam

- 1.2lb density with a 32 IFD
  - Open cell polyurethane
- 

## SUSTAINABILITY

Indoor Air Quality Gold Certified through SCS Global

Made in America

Foam

- CertiPur-USA

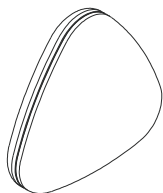
Cartons & Packaging

- 20% pre-consumer recycled content



## MODEL

### 8400PTR | Triangle



#### Grade-in Upholstery

Fabric Grade

COM	A	B	C	D	E	F	G	H	I	J	K	L
\$243	296	314	331	349	367	385	403	420	438	456	474	491

#### Dimensions (w x d x h)

Overall | 17" x 17" x 6"

#### Shipping

All pricing is FOB Louisville, KY.

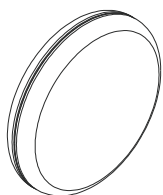
Weight | 1.5lbs

LTL, UPS | 1/carton | 1.1 CF | 18" x 18" x 7"

COM | 0.6 yd

## MODEL

### 8400PRD | Round



#### Grade-in Upholstery

Fabric Grade

COM	A	B	C	D	E	F	G	H	I	J	K	L
\$243	296	314	331	349	367	385	403	420	438	456	474	491

#### Dimensions (w x d x h)

Overall | 17" x 6"

#### Shipping

All pricing is FOB Louisville, KY.

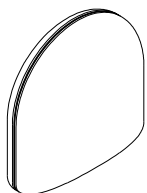
Weight | 1.5lbs

LTL, UPS | 1/carton | 1.1 CF | 18" x 18" x 7"

COM | 0.6 yd

## MODEL

### 8400PHR | Half Round



#### Grade-in Upholstery

Fabric Grade

COM	A	B	C	D	E	F	G	H	I	J	K	L
\$241	294	312	330	348	365	383	401	419	437	454	472	490

#### Dimensions (w x d x h)

Overall | 17" x 17" x 6"

#### Shipping

All pricing is FOB Louisville, KY.

Weight | 1.5lbs

LTL, UPS | 1/carton | 1.1 CF | 18" x 18" x 7"

COM | 0.6 yd

# ATMOS

## MODEL

### 8400PRC | Racetrack

---



#### Grade-in Upholstery

Fabric Grade

COM	A	B	C	D	E	F	G	H	I	J	K	L
\$306	412	447	482	517	553	588	623	658	694	729	764	799

#### Dimensions (w x d x h)

Overall | 26" x 16" x 6"

#### Shipping

All pricing is FOB Louisville, KY.

Weight | 2.25lbs

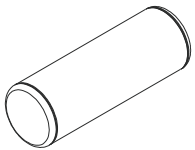
LTL, UPS | 1/carton | 1.85 CF | 27" x 17" x 7"

COM | 1 yd

## MODEL

### 8400PBL | Bolster

---



#### Grade-in Upholstery

Fabric Grade

COM	A	B	C	D	E	F	G	H	I	J	K	L
\$376	489	527	564	602	640	677	715	753	790	828	866	903

#### Dimensions (w x d x h)

Overall | 18" x 6"

#### Shipping

All pricing is FOB Louisville, KY.

Weight | 2lbs

LTL, UPS | 1/carton | 0.6 CF | 19" x 7" x 7"

COM | 0.6 yd

## FINISHES

### Upholstery

- A large selection of graded-in upholstery is available (excluding vinyls and leathers). View upholstery on our website.

---

## HOW TO SPECIFY

1. Select model #.
2. Select upholstery.

