

ACORN



ACORN

DESIGNER

- Umage; Søren Ravn Christensen

LEAD TIME

- 2 weeks

GSA

- Not available

SPECIFICATIONS

Material

- Glass outer shell
- Silicone cap
- Aluminum interior

Assembly

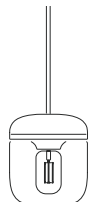
- Assembly required

Light Source

- E26/E27 - max 15W LED
- 1.5W Edison-style LED bulb included

MODEL

Pendant Lamp



\$425

Dimensions

Diameter | 5.5"

Height | 6.3"

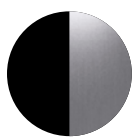
Shipping

All pricing is FOB Louisville, KY.

Weight | 1.5lbs

Dimensions | 6.9" x 6.9" x 6.9"

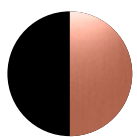
FINISHES



Black/
Steel



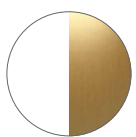
Black/
Brass



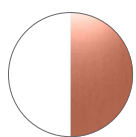
Black/
Copper



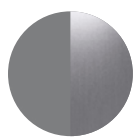
White/
Steel



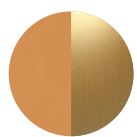
White/
Brass



White/
Copper



Smoked/
Steel



Amber/
Brass

Black Canopy & Cord

2081-4008-4040 | Black/Steel

2082-4008-4040 | Black/Brass

2083-4008-4040 | Black/Copper

2214-4008-4040 | Smoked/Steel

2215-4008-4040 | Amber/Brass

Black Plug-In Cord

2081-4010-4040 | Black/Steel

2082-4010-4040 | Black/Brass

2083-4010-4040 | Black/Copper

2214-4010-4040 | Smoked/Steel

2215-4010-4040 | Amber/Brass

White Canopy & Cord

2104-4007-4040 | White/Steel

2105-4007-4040 | White/Brass

2106-4007-4040 | White/Copper

White Plug-In Cord

2104-4009-4040 | White/Steel

2105-4009-4040 | White/Brass

2106-4009-4040 | White/Copper

HOW TO SPECIFY

1. Select model #.