

# AVALON



# AVALON

## DESIGNER

- UNION Design

---

## LEAD TIME

- 2 weeks

## GSA

- SIN 33721

---

## SPECIFICATIONS

### Chaise Lounge

- 16mm plywood core
- Powder coated steel frame & cross braces
- 3D knit textile from recycled polyester
- 1.5" molded foam

### Swivel Table

- 1" plywood with HPL surface
- Powder coated steel leg & cross braces
- Powder coated steel device stand
- Height adjustable from 25"-30" with pneumatic lift
- 360° swivel
- Can be left or right mounted on chaise

### Screen

- Powder coated steel frame
  - 3D knit cover made from recycled polyester
  - Can be left or right mounted on chaise
- 

### Side Table

- Powder coated steel frame
- 1" plywood with HPL surface

### Hook

- Powder coated steel mounting post
- 1" plywood with HPL surface

### Glides

- Non-marring, nylon

## REGULATORY

- Meets ANSI/BIFMA X5.11 Heavy Occupancy
- 

## SUSTAINABILITY

Indoor Air Quality Gold Certified through SCS Global

### Steel

- 10% pre-consumer recycled content
- VOC-free powder coat

### Wood

- FSC certified

### 3D Knit

- Made from 100% recycled polyester
- 100% recyclable after useful life
- Zero waste production

### Glides

- 5-10% pre-consumer recycled content

### Hardware

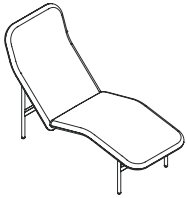
- 10% pre-consumer recycled content

### Cartons & Packaging

- 20% pre-consumer recycled content

## MODEL

### 8800 | Chaise Lounge



**3D Knit**

\$2846

#### Grade-in Upholstery

Fabric Grade

COM	A	B	C	D	E	F	G	H	I	J	K	L
\$2846	2947	3047	3147	3248	3348	3448	3549	3649	3749	3850	3950	4050

#### Dimensions (w x d x h)

Overall | 24.2" x 59" x 38"

Seat Height | 13.6"

#### Shipping

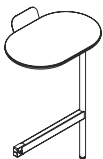
All pricing is FOB Louisville, KY. Freight class.

Weight | 55lbs

LTL | 1 carton | 8.1 CF

## MODEL

### 8801 | Swivel Table



\$809

#### Dimensions (w x d x h)

Overall | 18" x 12" x 28"

#### Shipping

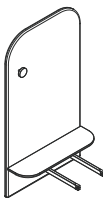
All pricing is FOB Louisville, KY. Freight class.

Weight | 14.5lbs

LTL, Small Parcel | 1 carton | 2.1 CF

## MODEL

### 8802 | Screen, Side Table, & Hook



\$1591

#### Dimensions (w x d x h)

Overall | 36" x 10" x 66"

#### Shipping

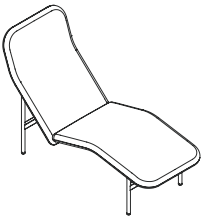
All pricing is FOB Louisville, KY. Freight class.

Weight | 40lbs

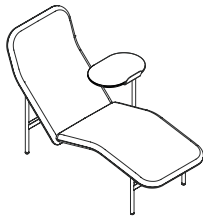
LTL | 3 carton | 9.1 CF

# AVALON

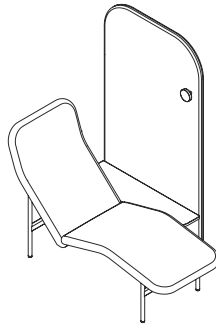
## CONFIGURATIONS



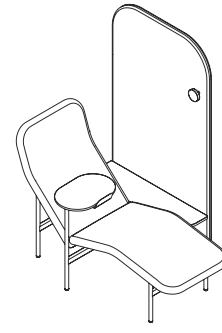
Lounge



Lounge with swivel table  
(left or right mounted)

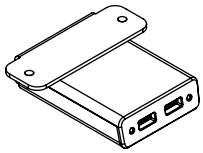


Lounge with screen,  
side table, and hook  
(left or right mounted)



Lounge with screen, swivel table,  
side table, and hook  
(left or right mounted)

## POWER OPTIONS



**Garcia** | \$598

### *Features*

- Under surface mount
- 2 2.1A USB ports
- 72" power supply cord

### *Finishes*

- Black | BE05429-UM-C/EQL-BKWW
- White | BE05429-UM-AV/CZH-WHWW

## FINISHES

### Frame



Jet Black  
9005

### Laminate



European  
Beech  
EB



Dark  
Chestnut  
DC

### 3D Knit



Black



Grey



Sand



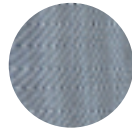
Forest



Fern



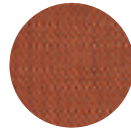
Ocean



Mist



Currant



Sunset

### Upholstery

- A large selection of graded-in upholstery is available. View upholstery on our website.

---

## HOW TO SPECIFY

1. Select model #.
2. Select 3D knit or upholstery for chaise lounge.
3. Select accessories model # (if applicable). Specify left or right mounting.
4. Select 3D knit or upholstery for screen (if applicable).
5. Select laminate for swivel table, side table, and/or hook (if applicable).
6. Select power (if applicable).