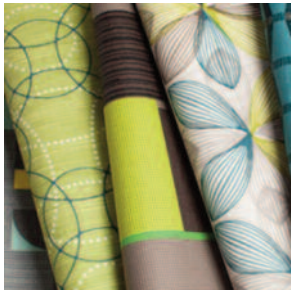


Our products are purposefully designed for easy maintenance and care.

Please contact us with any additional questions you may have about the proper cleaning of your KFI Studios products, post installation.

BLEACHABLE UPHOLSTERY



KFI Studios offers a deep line up of bleachable upholstery options as part of our grade-in program. We recommend referring to the fabric manufacturer's specific guidelines before approaching and contacting our customer service team.

- CF Stinson Rapid Upholstery Solutions for Healthcare
- Momentum COVID-19 Approved Cleaners
- Mayer Fabrics Bleach Cleaning Guide
- UltraFabrics Cleaning Guidelines

CDC Guidelines

Read the CDC Guidelines for cleaning and disinfecting your office facility [here](#).

GENERAL UPHOLSTERY



KFI Studios offers a wide and beautiful array of upholstery options as part of our grade-in program. We recommend referring to the fabric manufacturer's specific guidelines before approaching and contacting our customer service team.

- CF Stinson Crypton Cleaners
- Maharam Maintenance
- Mayer Fabrics Care Information
- CULP Cleaning Guidelines
- Cortina Leathers Care & Cleaning

FRAME CARE & CLEANING



Powder Coat Cleaning

Clean painted/powder coat products with a slightly damp cloth using a mild solution of soap and water. Bleach cleanable with 10:1 ratio of water to bleach.

Chrome Finish

Chrome finishes may be cleaned with a high quality chrome cleaner to ensure the brightest finish. Bleach cleanable with 10:1 ratio of water to bleach.

Aluminum and Stainless Steel

Clean with a damp soft cloth using a mild soap solution or glass cleaner. No abrasive cleaners should be used. Bleach cleanable with 10:1 ratio of water to bleach.

POLYPROPYLENE & OUTDOOR FURNITURE



Polypropylene

Polypropylene finishes are found on many of KFI Studios seating solutions and can be easily cleaned with a diluted 10:1 water to bleach solution.

Outdoor Furniture

Cleaning and maintenance of outdoor furniture is key to its durability. Use this method for a quick clean up here and there throughout the season. Use a mild bleach solution for stubborn stains.

1. Mix mild dish soap with warm water.
2. Use a clean cloth to wipe soapy mixture onto surfaces, cleaning off excess dirt.
3. To sanitize, mix 1/3 bleach and 2/3 water and then apply bleach cleaning solution with clean cloth.
4. Rinse thoroughly.

SOLID WOOD & LAMINATES



Solid Wood Maintenance

Wood top coat is resistant to most household chemicals (ex. 409, Fantastic, Murphy's or Pledge). We do recommend trying a small or hidden spot first with any cleaner before using on entire surface.

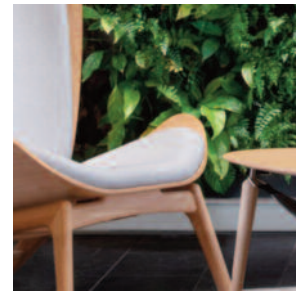
Avoid hot products on surface. Clean spills with mild soap and water using a damp cloth. Apply solution with spray bottle, wipe clean and dry with soft cloth. Avoid harsh or abrasive cleaning materials. Do not use furniture polish containing oil, wax or silicone which can produce an oily film or haze.

Please contact your KFI representative or call 800-457-5073

Laminates

Our friends at WilsonArt have created a handy guide for care and maintenance of Laminates, [click here](#)

UMAGE - COPENHAGEN FURNITURE CARE



Please follow the below care and safety instructions to ensure many years of enjoyment with your new design item from our partner UIMAGE-Copenhagen.

- UIMAGE Cleaning Guidelines